

CERPASS HTB®

CERPASS HTB®, based on the original CERPASS XT[®] seeded gel product, offers the latest in ceramic grain technology. Building on the unique nano-structure of the grains, which are composed of extremely uniform, sub-micron crystals, HTB modifies the chemical composition to minimize grain growth at high temperatures. This subtle change in chemistry stabilizes the nano-structure and allows for vitrified bond systems of up to 1250°C. A second benefit is the grains' low force grinding capability. CERPASS HTB® is the most versatile, longest lasting ceramic grain on the market today.

Physical Properties: (Typical)

Compound	Alpha Aluminum Oxide	Hardness (GPa)^A	< 20
Color	White Translucent to Off-White/ Opaque	Density (g/cm³)^B	> 3.9
Shape	Weak and Splintery	Crystal Size (µm)^C	0.2

A: by Vickers Diamond Indent Method B: by Helium Pycnometry
C: by Uncorrected Intercept Method of SEM Photographs

Chemical Properties: (Typical)

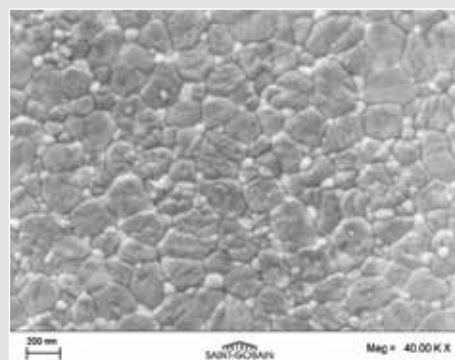
Predominant Chemical Composition		Al ₂ O ₃ ≥ 95 %	
Trace Chemical Composition			
Constituent	Typical	Constituent	Typical
ZrO ₂	2-3%	Fe ₂ O ₃	< 200 PPM
MgO	~ 1%	Na ₂ O	< 100 PPM
SiO ₂	< 700 PPM	CaO	< 100 PPM

Product Availability: Macro-Sized Grains - Treated and Untreated

CERPASS® Code	Description	Bond Type	Sizing	Grit Sizes
HTB-0535	Weak, Untreated	Vitrified	ANSI or FEPA-F	16-220
HTB-0537	Weak, Silane treated	Resin/Organic	ANSI or FEPA-F	16-220



Macrostructure of 36-grit CERPASS HTB® grains.



An actual scanning electron microscope (SEM) photograph, at 50,000 magnification, shows the unique sub-micron crystal structure of CERPASS HTB® grains

Sizing Convention and Specifications:

Sizing Fractions - Distribution Control

CERPASS HTB® is processed to American National Standards Institute (ANSI), Table 2, ANSI B74.12-2001 and Fédération Européenne des Fabricants de Produits Abrasifs (FEPA -F), FEPA -standard 42-GB-1984 R 1993.

	Control Screen Coarse Grain	Oversize	First Nominal	Second Nominal	Control Screen Fines Grain		Control Screen Coarse Grain	Oversize	First Nominal	Second Nominal	Control Screen Fine Grain
Grit Size	Test Sieve 1	Test Sieve 2	Test Sieve 3	Test Sieve 3 & 4	Through Test Sieves 5	Grit Size	Test Sieve 1	Test Sieve 2	Test Sieve 3	Test Sieve 3 & 4	Through Test Sieves 5
16	+10/0	+14/(0-20)	+16/45+	(+16+18)/70+	-20/(0-3)	70	+45/0	+60/(0-25)	+70/40+	(+70+80)/65+	-100/(0-3)
20	+12/0	+16/(0-20)	+18/45+	(+18+20)/70+	-25/(0-3)	80	+50/0	+70/(0-25)	+80/40+	(+80+100)/65+	-120/(0-3)
24	+16/0	+20/(0-25)	+25/45+	(+25+30)/65+	-35/(0-3)	90	+60/0	+80/(0-20)	+100/40+	(+100+120)/65+	-140/(0-3)
30	+18/0	+25/(0-25)	+30/45+	(+30+35)/65+	-40/(0-3)	100	+70/0	+100/(0-20)	+120/40+	(+120+140)/65+	-200/(0-3)
36	+20/0	+30/(0-25)	+35/45+	(+35+40)/65+	-45/(0-3)	120	+80/0	+120/(0-20)	+140/40+	(+140+170)/65+	-230/(0-3)
46	+30/0	+40/(0-30)	+45/40+	(+45+50)/65+	-60/(0-3)	150	+100/0	+140/(0-15)	+200/40+	(+200+230)/65+	-325/(0-3)
54	+35/0	+45/(0-30)	+50/40+	(+50+60)/65+	-70/(0-3)	180	+120/0	+170/(0-15)	+200+230/40+	(+200+230+270)/65+	-
60	+40/0	+50/(0-30)	+60/40+	(+60+70)/65+	-80/(0-3)	220	+140/0	+200/(0-15)	+230+270/40+	(+230+270+325)/60+	-

Loose Pack Density (LPD) Limits: (Macro Sizes)

LPD: HTB - Weak Shape

Grit Size	Lower Limit (g/ cm³)	Upper Limit (g/ cm³)	Grit Size	Lower Limit (g/ cm³)	Upper Limit (g/ cm³)	Grit Size	Lower Limit (g/ cm³)	Upper Limit (g/ cm³)
16	1.73	1.88	54	1.62	1.77	120	1.65	1.80
20	1.73	1.88	60	1.62	1.77	150	1.62	1.77
24	1.70	1.85	70	1.62	1.77	180	1.58	1.73
30	1.68	1.83	80	1.65	1.80	220	1.58	1.73
36	1.68	1.83	90	1.65	1.80			
46	1.64	1.79	100	1.65	1.80			

LPD measured on untreated grains

For more information, please contact:

Saint-Gobain Ceramic Materials Specialty Grains and Powders

1 New Bond Street
M/S 525-203
PO Box 15137
Worcester, MA 01615-0137
USA
Tel: +1 800 243 0028
Fax: +1 508 795 2380

Saint-Gobain Ceramic Materials GmbH Specialty Grains and Powders

Branch office
Concordiaplatz 3
51143 Köln
Germany
Tel: +49 2203 956 468
Fax: +49 2203 956 421

Saint-Gobain K.K. CM Division

Kitahama 1-Chome Heiwa Bldg. 7F
1-1-14, Kitahama, Chuo-ku, Osaka, 541-0041
Japan
Tel: +81 6 4707 1700 (main)
Fax: -81 6 4707 1701

Saint-Gobain Ceramic Materials Specialty Grains and Powders

7th Floor, Office Tower
No. 222 East Yan'an Road
Bund Center
Shanghai 200002
China
Tel: +86 21 6361 7731

WARNING: The information contained in this document is believed to be accurate and reliable without guarantee or warranty on the part of Saint-Gobain Ceramics and Plastics Inc. Further, nothing present herein should be interpreted as an authorization or inducement to practice any patented invention without an appropriate license.

CGN2016-08-01
SG-SGP-09_E01

www.abrasivematerials.saint-gobain.com

©2016 Saint-Gobain Ceramic Materials GmbH